

Zigbee Dimming LED driver & App wireless control network connecting solution(Setting steps)

(NOTE: Suitable for mobilephone with IOS & Android & HarmonyOS system)



Step 1: Download “Smart Life” app or “Tuya Smart” app

Step 2: After entering the app, register the account and click “Add Device” button (please confirm the signal type of the router is 2.4GHz WIFI to add the device). (See figure 1.1)

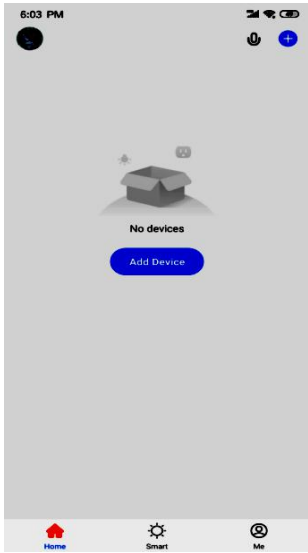


Figure 1.1

Step 3: Enter the Menu interface. (See figure 1.2).

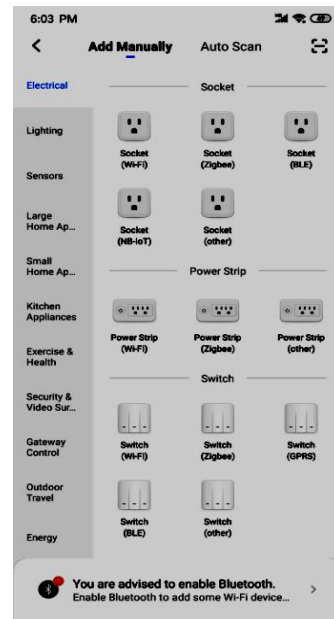


Figure 1.2

Step 4: clicking the option (Gateway control) on the left category bar, Then Click the button”Wireless Gateway (Zigbee)” (See figure 1.3)

Step 5: Select 2.4Ghz Wi-Fi Network and enter password. (See Figure 1.4)

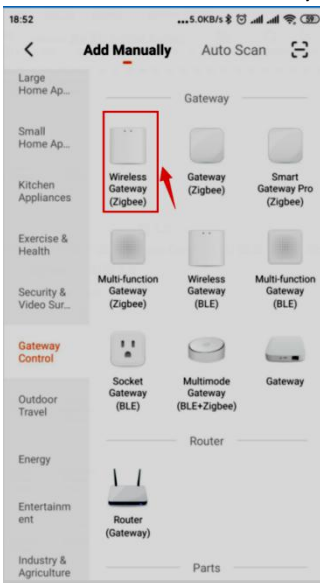


Figure 1.3

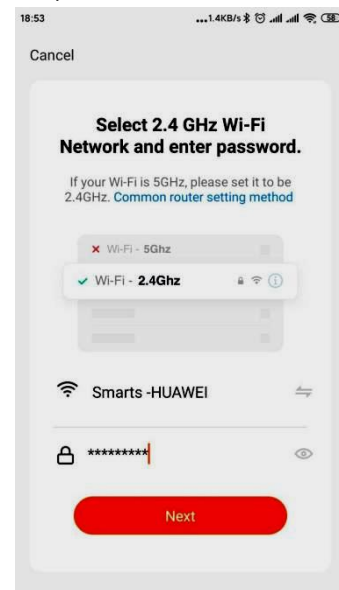
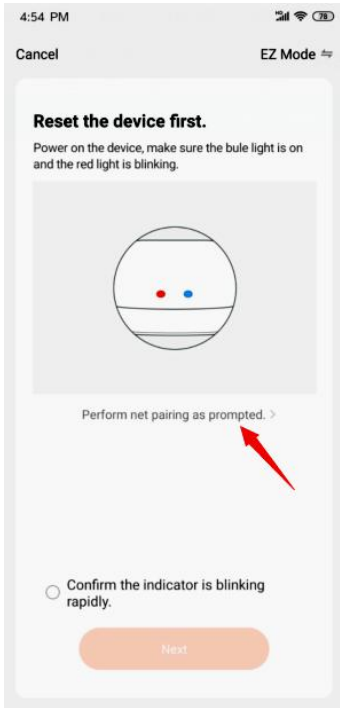
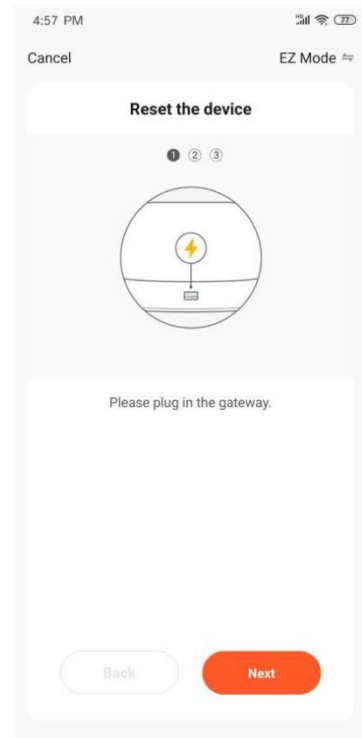


Figure 1.4

Step 5: Reset the Zigbee Wireless device first according to the reset Instruction (see figure 1.5) (1) Power on the Zigbee gateway. (see figure 1.6)

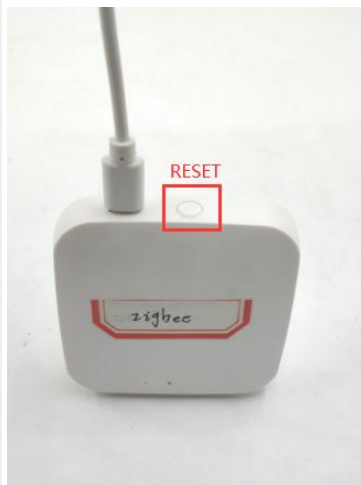
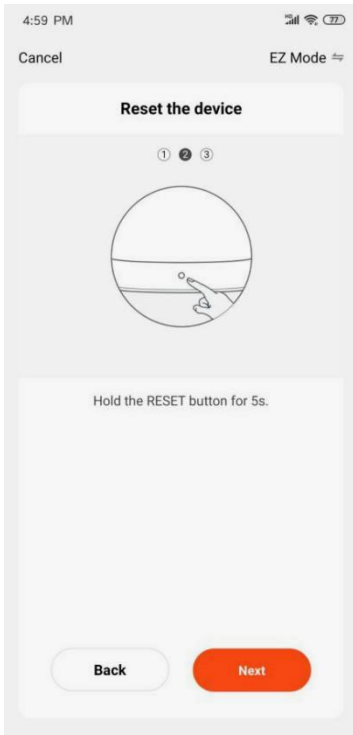


(Figure 1.5)



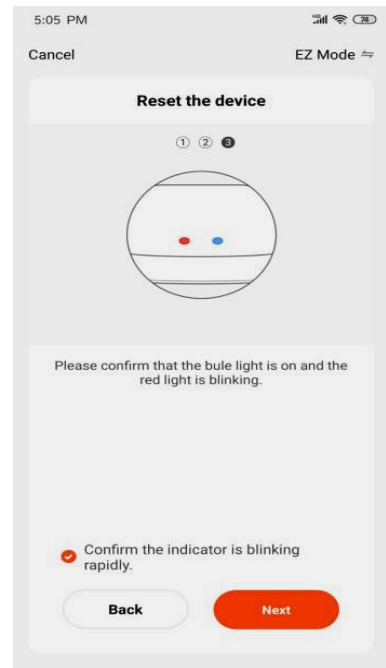
(Figure 1.6)

(2) Press the "reset" key 5 seconds. (see Figure 1.7)



(Figure 1.7)

(3) Pl. Confirm the "Red light" blinking rapidly & "Blue light" always power on, then click "next" button to pair the network. (see Figure 1.8)



(Figure 1.8)

(4) If the Zigbee device matched well with the “Gateway control” APP, it needs to go through 3 steps: Scan devices - Register on Cloud - Initialize the device. (See figure 1.9)

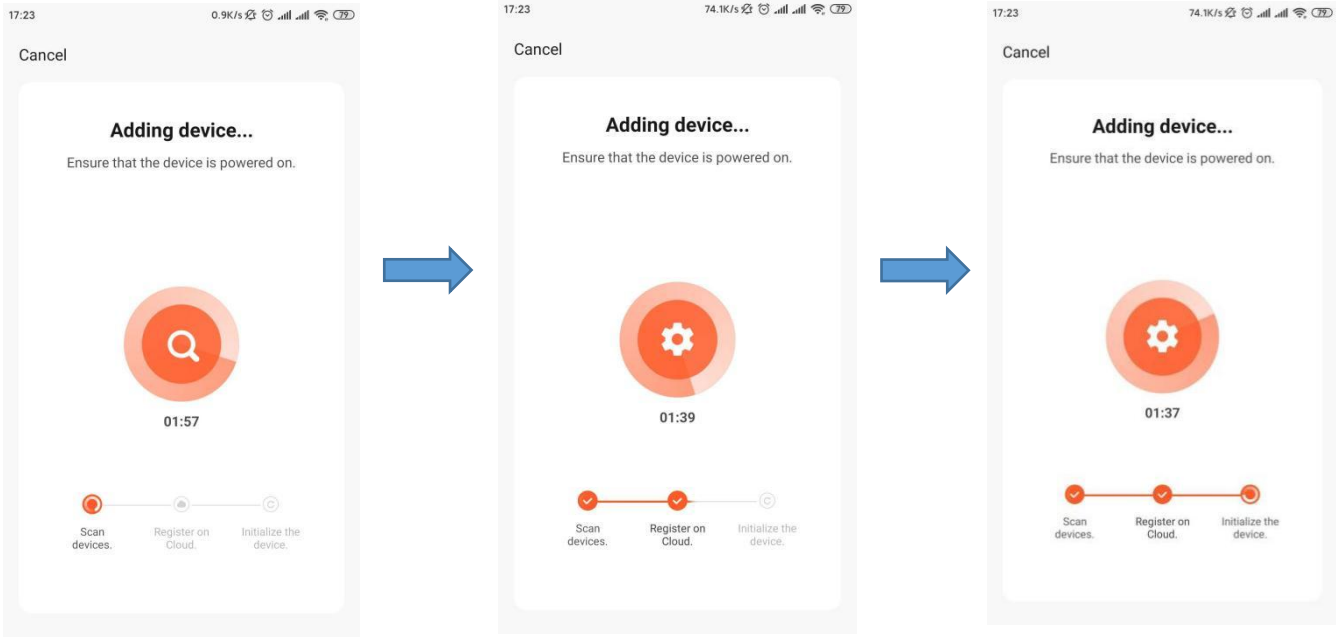
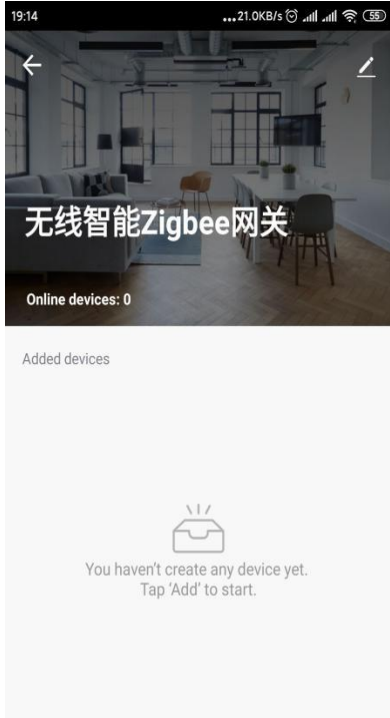


Figure 1.9

Step 6: Click “Done” to enter Wireless smart Zigbee gateway and Click “Add subdevice” to create device. (see Figure 2.0)

(1) Ensure the Zigbee dimmable power supply and the RGB light is well connected. (see Figure 2.1)



+ Add subdevice

Figure 2.0



Figure 2.1

(2) Power ON/OFF the zigbee dimmable LED power supply 3 times, to Reset the power supply, when the RGB light is blinking quickly, click (LED already blink) button to discover nearby zigbee gateway device. (See Figure 2.2)

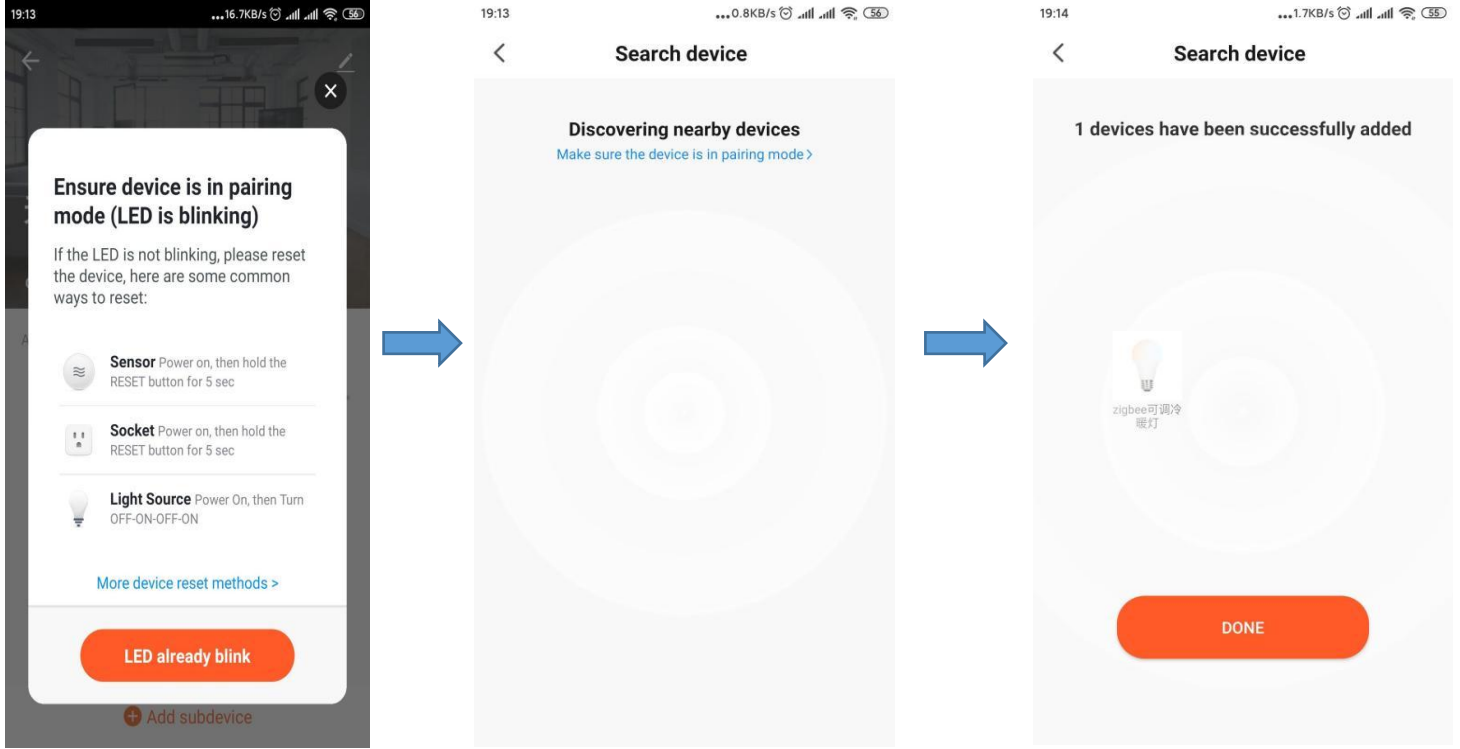
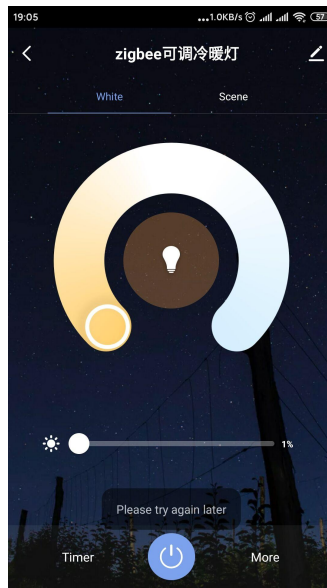
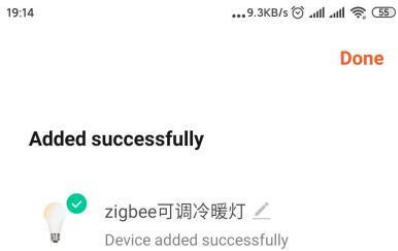


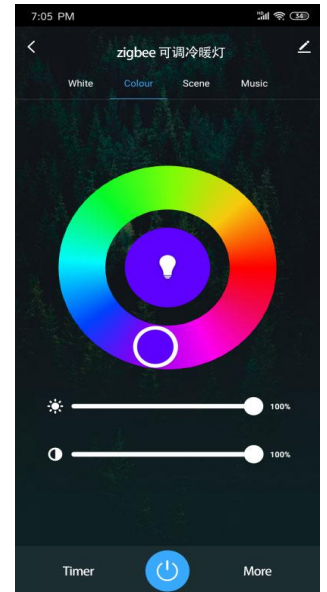
Figure 2.2

(3) When Added successfully, pl. Click "Done" on the right corner. (See figure 2.3)

Step 7: set the RGB lights from the APP Platform. (See figure 2.4)



(1CH---2CH platform)



(3CH---5CH platform)

Figure 2.3

Figure 2.4

Tip: when paired successfully, you can remote control RGB lights.

Tip: APP platform will be changed by different color LED light you connected.

Step 7: (1) click "White" to control two different color, adjust the LED brightness from 0~100%, timer & switch ON/OFF the LED.
 or Click on the "scene" interface to select the lighting effects in different scenes or click "Edit" & add new scenes.



Figure 2.4

(2) If the Zigbee dimmable LED power can support multi-color controlling, Click the "colour" button to adjust colors. Click on the "scene" to select the lighting effects; Click "Music" to set the lighting blinking as per the music rhythm. Switching ON/OFF the light directly by press the power button at the bottom.. (See Figure 2.5)

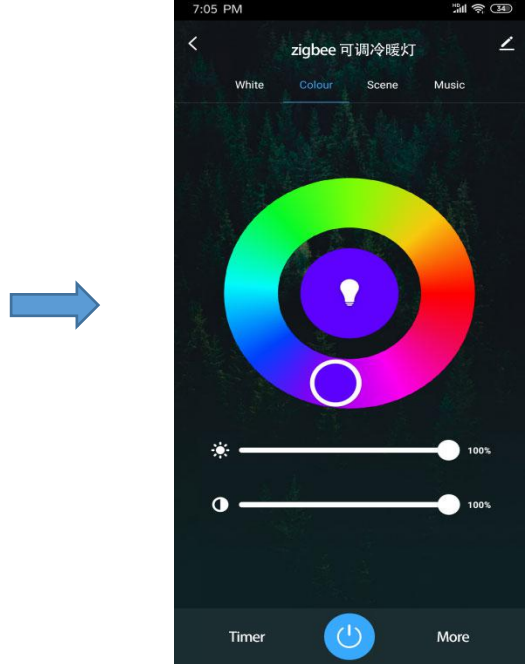


Figure 2.5

(3)Click "More" to select more different timer function setting:
 3.1) Schedule (Add different timer data to set ON/OFF time)
 (see Figure 2.6)

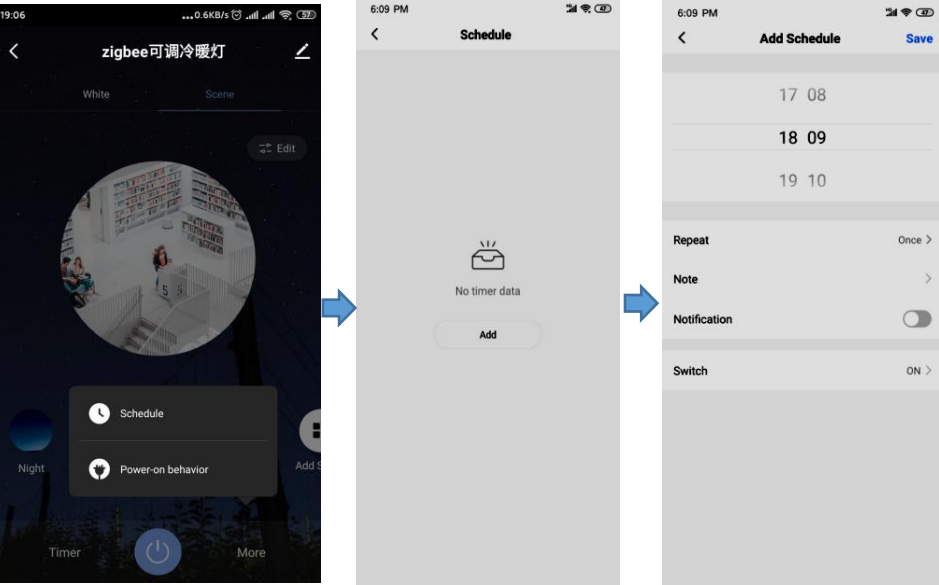


Figure 2.6

3.2) Power on behavior. (see Figure 2.7)
 (3 different Light status after power on available)

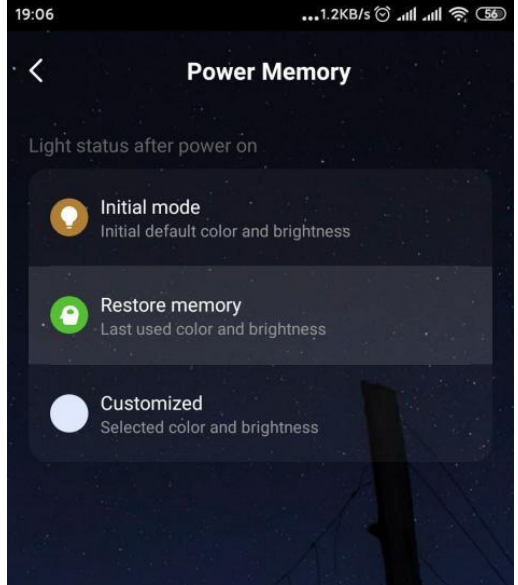


Figure 2.7

How to set Zigbee dimming controlled by smarts speaker?

Step 1: Click the right up corner and enter the setting platform. (see figure 2.8)

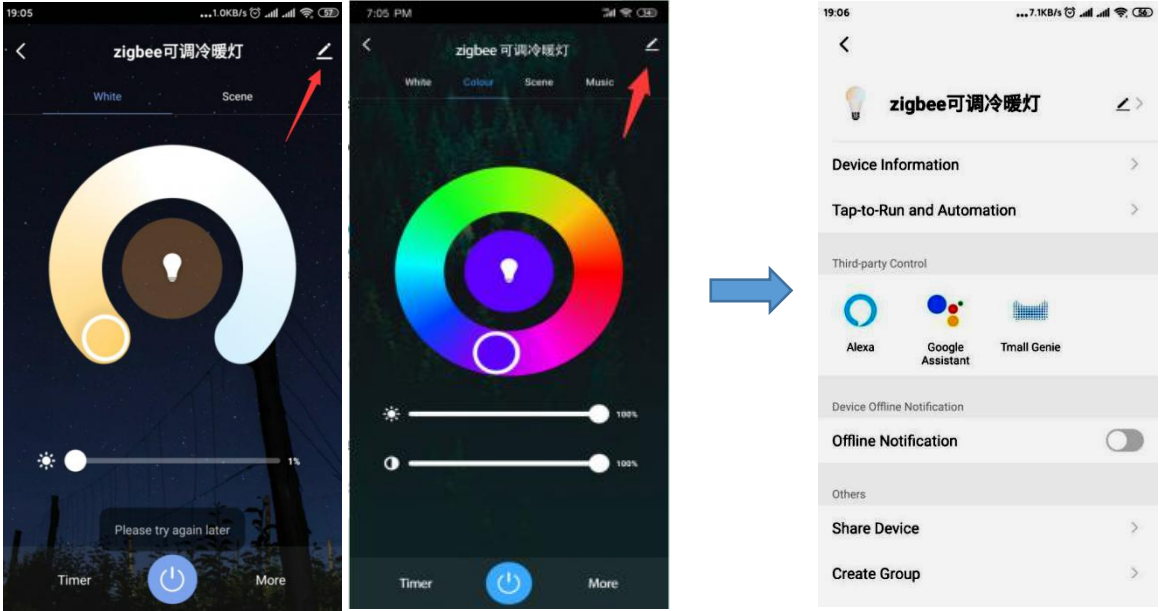


figure 2.8

Step 2: Select third party control: Alexa, Google Assistant, Tmall Genie

1) Amazon Alexa smart speaker setting: (see figure 2.9)

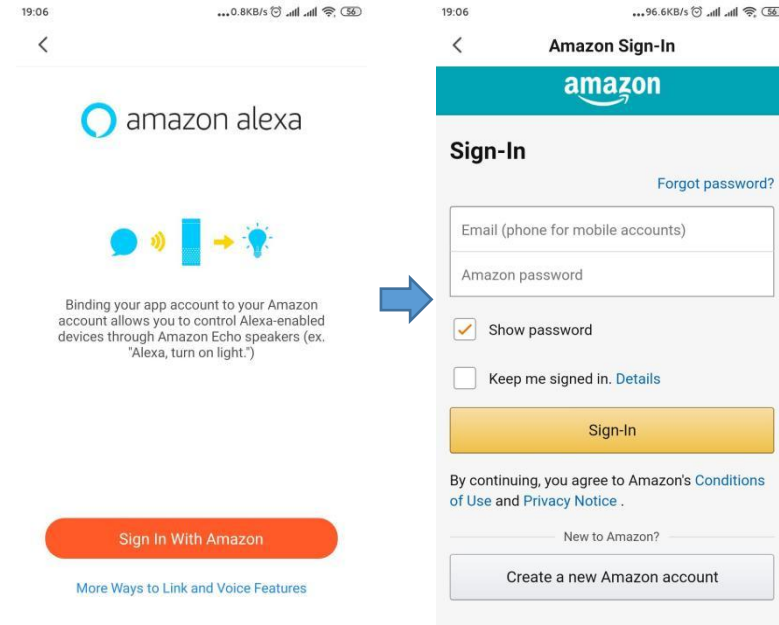


Figure 2.9

2) Google Assistant smart speaker setting: (see figure 3.0)

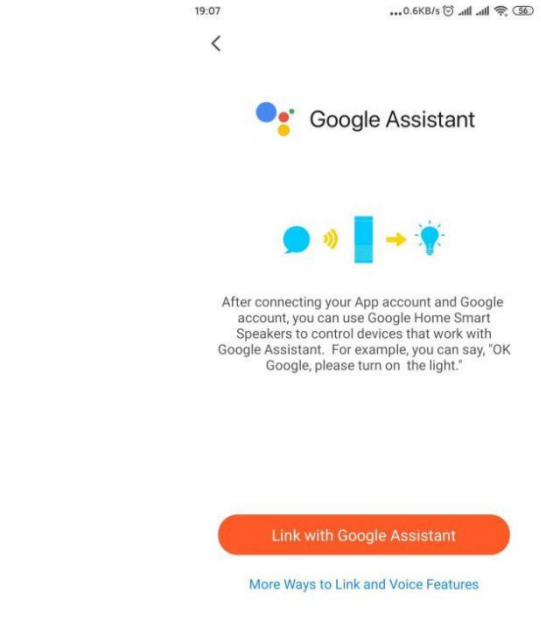


Figure 3.0

Tip: When register to the third party and sign-in, you will realize the smart speaker to control the LED lights.

Note: 1) Pl. Don't hesitate to contact us if you have any question.

2) For more wireless dimmable type LED drivers, pl. Login our Official website to know more about us.

www.swinpower.com or www.smartpower.com